

Company Profile



 **QES (PVT.) LTD.**
QUALITY IS OUR COMMITMENT...



Who We Are

QES is an Environmental testing, inspection, consultancy, and service initiative. Our specialized team of experts and technicians are highly trained professionals. Many experts have advanced degrees from reputed universities at home and abroad. Our project management implementation and inspection works are performed under strict adherence to applicable regulatory standards.

We *QES* work as a Consultancy Firm in the field of Environmental and Socio-economic study, feasibility study, environmental parameters testing, testing cranes, other lifting equipment/machinery, pressure plants, vessels, loose gear and inspection under the rules and regulations of Bangladesh.

QES is a professional partnership providing diverse specialized consulting and management Services in environment and sustainable development. Its clients include Power plants, Garments, Pharmaceuticals, Textiles, Washings, Ceramics, Leather, Plastic, Printing, Packaging, and any Hard-liner Industries in national and multi-national communities.

Our plan is to be a part of the policies and help the different stakeholders reach their sustainability goals. At the same time, *QES* will act as a supporting annex to the industries to comply with the national and international requirements.

QES is an accredited Competent organization for analytical and environmental laboratory testing, testing cranes, other lifting equipment/machinery, pressure plants, vessels, loose gear, and environmental consultancy firm practicing ISO/IEC 17020:2012 standards and maintaining DIFE rules and regulations.

We Offer

Environmental Testing/Monitoring Activities:

- ✓ Stack Air Emission Inspection/Monitoring & testing
- ✓ Ground water quality monitoring & testing
- ✓ Surface water quality monitoring & testing
- ✓ Drinking water quality monitoring & testing
- ✓ Chemical Wastewater quality monitoring & testing
- ✓ Sewage water quality monitoring & testing
- ✓ Soil quality monitoring & testing
- ✓ Ambient Air Quality Inspection/Monitoring & testing
- ✓ Indoor Air Quality (IAQ) Inspection/Monitoring & testing
- ✓ Ambient/Indoor Noise Quality/Level Inspection
- ✓ Light Level Inspection
- ✓ Indoor Temperature & Humidity Inspection
- ✓ Ozone Depletion Substance (ODS) inventory
- ✓ Greenhouse Gas Emission Assessment (GHG)
- ✓ Boiler and Generator Efficiency Measurement
- ✓ Testing Cranes, Other Lifting Equipment/Machinery, Pressure Plants, Vessels, Loose Gear and Environmental Testing and Consultancy, etc.

Environmental Assessment & Consultancy Activities:

- ✓ Initial Environmental & Social Examination (IEE)
- ✓ Environmental & Social Impact Assessment (EIA)/(ESIA)
- ✓ Environmental Management Plan (EMP)
- ✓ Environmental Management System (EMS)
- ✓ Environmental Health & Safety (EHS) Management
- ✓ Feasibility Study / ESG Reporting
- ✓ Chemical Management Plan (CMP)
- ✓ Energy Audit & Energy Management Plan
- ✓ LEED/Green Building Certification
- ✓ Higg Index Consultancy
- ✓ Sludge Management Plan
- ✓ 5R strategy and Solid Waste Management
- ✓ Zero Liquid Discharge Plan

QUALITY POLICY

“QES Private Limited (BANGLADESH), We, as employees –and owners of *QES* are committed to being a leading organization known for *QES* quality of service & and customer focus. We would constantly upgrade our capabilities to meet customers’ requirements & and to exceed their expectations.

We are committed to complying with the international standards ISO/IEC17020:2012, ISO 9001:2015, DIFE requirements and other internationally recognized quality management systems by adopting good professional practices. We would also strive to be a customer-focused organization exhibiting good leadership & and teamwork”

All the persons in the laboratories must be familiar with the quality procedures and policies and they have to follow the proper documentation process of the Quality management system.

QES is a private limited company which is registered under the Company Act. (Act XVIII of 1994) 1994, No. C-149692/2009 and no activity that is illegal as per the rules and regulations of the People’s Republic of Bangladesh Govt. is done here.

OBJECTIVES

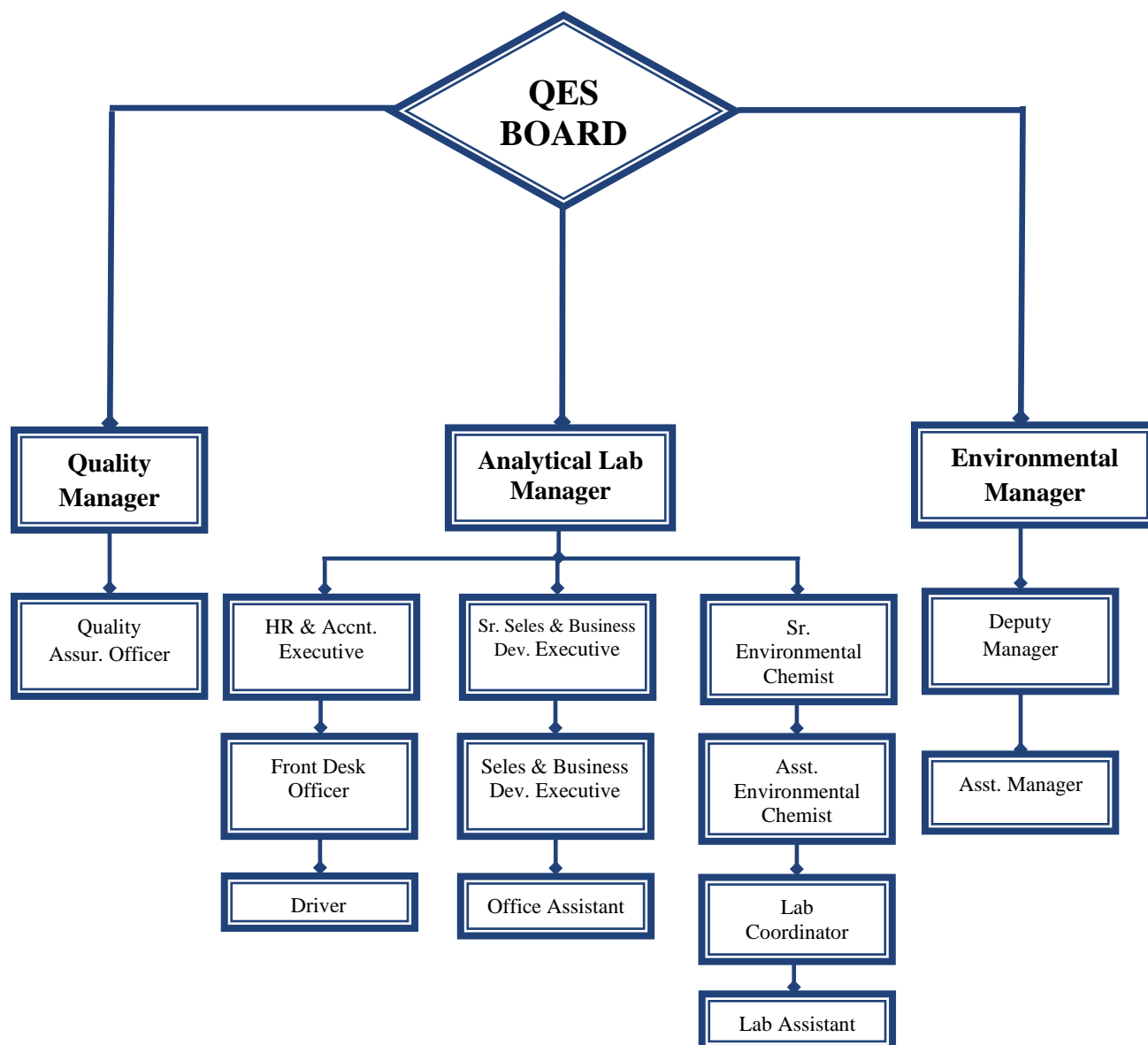


ORGANIZATION STRUCTURE OF QES

The organizational structure of *QES* has been designed to meet the requirements of an effective and efficient testing and calibration service system.

The Apex Body in the *QES* organization is the QES Board. The Board provides policy, guidelines, and direction to QES. All Directors, Quality Managers, and Analytical Lab Managers are members of the *QES* Board. The Managing Director is the CHAIRMAN of the board.

The organization chart of *QES* is given below –



AIR QUALITY INSPECTION AND TREATMENT

QES high-quality equipment is available to assess your air quality. Now most of the customers are committed to the environmental aspect. As a result, all kinds of Air Quality tests are a vital requirement of customers. So QES is also committed to assessing your Indoor and ambient Air Quality with transparency and quality. To assess the Air Quality we have to follow some standards, such as ECR, 1997, 2023 - DoE, WHO, World Bank, etc. Also, according to the requirement of the HIGG Index QES calculates the total emission volume of the year from individual sources. The following Air Quality Test is done by QES.

- ✓ Stack Air Emission Inspection & testing
- ✓ Indoor Air Quality (IAQ) Inspection & testing
- ✓ Ambient Air Quality Inspection & testing
- ✓ Ozone Depleting Substance
- ✓ Greenhouse Gas Emission Assessment

NOISE/SOUND LEVEL INSPECTION

In any work environment, there can be many reasons to keep sound levels within a reasonable range. Sound levels above this range are perceived as "noise." Noise can distract the workforce, creating an unsafe workplace. Or, worse yet, it can cause hearing loss.

A worker distracted by noise may become less productive and even irritable. If noise levels are too loud, the worker may not be able to hear warning signals or instructions. High noise levels over prolonged periods of time can lead to permanent hearing loss. When any of these conditions exist, it is important to control, contain, reduce, or eliminate the noise source so a safe work environment can be maintained.

QESs' high-quality master instruments are available to assess your Sound Level. QES is also committed to assessing your Sound/noise level inside the factory premises with transparency and quality. To assess this Sound/Noise level, we have to follow some standards, such as ECR, 1997, 2023 - DoE, WHO, World Bank, etc.

TEMPERATURE & HUMIDITY LEVEL INSPECTION

Complaints about air-conditioning and heating in offices (and other workplaces) are very common - it is either too hot or too cold; the temperature varies drastically throughout the day; the draughts are terrible; etc. It's not only the temperature that affects how people feel but also the humidity levels and air movement. Humidity affects the stress on materials and products to a degree that can be calculated. The data generated by humidity testing can be important in planning materials selection, paints and coatings, and the expected lifetime of a product. High and low humidity can be simulated in a number of testing chambers and machines.

QES is here to assist you in measuring Temperature and Humidity in your factory premises with high-quality equipment and transparency. To assess this Temperature level, we have to follow some standards, such as ECR, 1997 - DoE, WHO, World Bank, etc.

INDOOR LIGHT/ ILLUMINANCE LEVEL INSPECTION

Good lighting will create a visual environment that enables people to see, move about safely, and perform visual tasks efficiently, accurately, and safely without causing undue visual fatigue and discomfort. To keep the people safe in your working environment, you need to maintain a standard Light quality level in your working condition for the whole time. We need to maintain this lighting level within legal limits to save our environment. Today it becomes the customer's requirements as well. Customers who are giving us orders are also committed to a safe environment where they are working.

QES is here to assist you in measuring lighting quality in your factory premises with high-quality equipment and transparency. To assess this lighting level, we use the BNBC Code and Labor Law.

WASTE/DRINKING/SURFACE/GROUND WATER TEST

QES has its own accredited analytical laboratory to perform all kinds of environmental and water quality tests & reporting. Besides this it has signed a MoU (Memorandum of Understanding) with the Department of Civil and Environmental Engineering of Shahjalal University of Science and Technology (SUST), Sylhet. & Mitra S.K. Private Limited (MSK) for additional support of Wastewater & Drinking Water Test. Required wastewater tests will be done here according to the international standards under the supervision of the prudent faculties of the department and test results will be issued to QES accordingly from the department.

QES will manage the whole system and make a bridge between the factory and the laboratory.

ENVIRONMENTAL IMPACT ASSESSMENT (EIA)

Environmental Impact Assessment (EIA) is a process of evaluating the likely environmental impacts of a proposed or existing project or development, taking into account inter-related socio-economic, cultural, and human-health impacts, both beneficial and adverse. Environmental Impact Assessment (EIA) is a tool used to identify the environmental, social, and economic impacts of a project prior to decision-making.

It aims to predict environmental impacts at an early stage in project planning and design, find ways and means to reduce adverse impacts, shape projects to suit the local environment, and present the predictions and options to decision-makers. By using EIA both environmental and economic benefits can be achieved, such as reduced cost and time of project implementation and design, avoided treatment/clean-up costs, and impacts of laws and regulations.

QES is here to assess your company's Environmental Impact so that you can know whether your activities are environmentally familiar as well as you can ensure your stakeholders about your stand regarding environmental commitments and sustainability.

ENVIRONMENTAL MANAGEMENT PLAN (EMP)

Environmental management plans describe how an action might impact the natural environment in which it occurs and set out clear commitments from the person taking the action on how those impacts will be avoided, minimized, and managed so that they are environmentally acceptable.

The primary objective of environmental management and monitoring is to record environmental impacts resulting from the project activities and to ensure implementation of the “mitigation measures” identified earlier in order to reduce adverse impacts and enhance positive impacts from specific project activities. Besides, it would also address any unexpected or unforeseen environmental impacts that may arise during the construction and operation phases of the project.

In essence, the EMP is to provide to contractors with a practical guide to measure compliance by all parties with the environmental requirements. The EMP achieves this by providing a framework for comprehensive monitoring and control of the construction and operation of the facility. The aim is to minimize the potential for negative environmental impact.

ENVIRONMENTAL MANAGEMENT SYSTEM (EMS)

An Environmental Management System (EMS) is a framework that helps a company achieve its environmental goals through consistent control of its operations. The assumption is that this increased control will improve the environmental performance of the company. The EMS itself does not dictate a level of environmental performance that must be achieved; each company's EMS is tailored to the company's business and goals.

An EMS helps a company address its regulatory demands in a systematic and cost-effective manner. This proactive approach can help reduce the risk of non-compliance and improve health and safety practices for employees and the public. An EMS can also help address non-regulated issues, such as energy conservation, and can promote stronger operational control and employee stewardship.

We QES are an EMS consultancy by provides manual, procedures, supported documents, and training based on the standard of ISO 14001.

INITIAL ENVIRONMENTAL EXAMINATION (IEE)

Projects, in which the requirement for an EIA needs to be ascertained, should be subjected to an Initial Environmental Examination (IEE). IEE is carried out to determine whether potentially adverse environmental effects are significant or whether mitigation measures can be adopted to reduce or eliminate these adverse effects. IEE requires more in-depth analysis than applied in the screening procedure.

Consequently, an IEE involves more time and resources. IEE also requires expert advice and technical input from environmental specialists so that potential environmental problems can be clearly defined.

ENVIRONMENTAL HEALTH AND SAFETY (EHS)

Environmental Health and safety (EHS) management refers to a cyclical business process for systematically achieving a desired level of EHS performance. EHS management systems involve planning and implementing the necessary systems, programs and procedures to achieve that level of performance, checking the results and making adjustments, as necessary, to ensure that the desired level of performance is being achieved.

FEASIBILITY STUDY

Project A feasibility study is a pragmatic way to evaluate whether or not a project plan could be successful. It evaluates the practicality of any project plan in order to judge whether or not you are able to move forward with the project. A project feasibility study examines all of a project's pertinent aspects, including economic, technical, legal, and scheduling issues to determine the possibility of the project's successful completion. Prior to commencing the project and investing funds, time, and efforts into it, authority conducts a feasibility study of the project.

HIGG INDEX CONSULTANCY

QES presenting you with a brand-new service "HIGG INDEX CONSULTANCY", where we will provide full support and solution for HIGG FEM 3.0. QES professional experts in HIGG 3.0 are helping manufacturers to better measure and manage the comprehensive environmental and social impacts of apparel. In HIGG CONSULTANCY service we cover the following areas in three different packages:-

- ✓ Environmental management systems
- ✓ Energy use and greenhouse gas emissions
- ✓ Aspect Impact Identification
- ✓ Water use
- ✓ Waste water/effluent
- ✓ Emissions to air
- ✓ Waste management
- ✓ Chemical use and management

As we have always promised our clients for quality service that's why we designed our HIGG CONSULTANCY service in different detailed packages.

SOLID WASTE MANAGEMENT & 5R POLICY

As a part of our strategy, QES is committed to developing new waste solutions that can help communities and organizations achieve their green goals, including zero waste. For Bangladesh Perspective we are especially focused on characterizing material streams to identify recycling, diversion, composting, energy recovery, and other opportunities to reduce waste disposal. We have highly experienced staff in this sector. In Solid waste management, we also provide:

- ✓ Waste management planning
- ✓ Handling of solid waste
- ✓ Waste collection systems
- ✓ Recycling and life cycle assessment
- ✓ Energy from waste and biomass
- ✓ Hazardous and health care waste

CHEMICAL MANAGEMENT POLICY

Nowadays, buyers and customers are more concerned about their health as well as for the environment and working conditions; as a consequence, chemical safety and policy have become the focus of producers. Many renowned buyers have made their own policies and regulations already.

A lot of international brands are following **Zero Discharge of Hazardous Chemical (ZDHC)** policies. They always try hard to maintain it in a strict way with zero tolerance. Some buyers require their own policy of the factory. The main gist of all those policies is to restrict the use of harmful chemicals which have adverse impacts on both human and environmental health. Some buyers have their own specific limitations on specific chemical use and the way of chemical storage. We are ready to help you fulfill the requirements of buyers on chemical safety and policy.

LEED and GREEN Building Certification

Leadership in Energy and Environmental Design (LEED) is one of the most popular green building certification programs used worldwide. Developed by the non-profit U.S. Green Building Council (USGBC) it includes a set of rating systems for the design, construction, operation, and maintenance of green buildings, homes, and neighborhoods that aims to help building owners and operators be environmentally responsible and use resources efficiently.

Bangladesh has entered the LEED certification generation and already has some successfully certified projects. Most of the projects from Bangladesh have been completed with the LEED certification consultation of Energy Solve International (ESI). ESI has signed a partnership agreement with QES to be their regional partner in Bangladesh and work on their behalf of.

QES WATER PURIFICATION SYSTEM

- ✓ Residential Drinking Water System
- ✓ Whole House Water Filtration System
- ✓ Commercial Water Treatment Plant
- ✓ Industrial Water Treatment Plant

- ✓ Trolley Mounted Mobile Water Treatment Plant
- ✓ DM Plant
- ✓ Water Treatment Chemicals
- ✓ Water Treatment Accessories
- ✓ Reverse Osmosis Anticipant Chemicals
- ✓ Chemical Metering Pump
- ✓ Effluent Treatment Plant (ETP) Design & Consultancy
- ✓ ETP chemicals, machineries & accessories

CRANES, LIFTING MACHINERY, PRESSURE PLANTS, VESSELS, LOOSE GEAR TESTING:

QES provides reliable and quality inspection services you need for your safety issues. Lifting Equipment and Accessories Inspections and Pressure Plants, Vessels Inspections are vitally important, not only for worker safety but also for proper operating systems. These Inspections are made compulsory by regulatory bodies and ensure the safety and reliability of your equipment. They are making sure that you, your workers, and your investments are safe.

BACKGROUND

- Established in 2009
- A private limited company registered under Act XVIII of 1994 in Bangladesh
- Certificate of Incorporation No. C-149692/2009

INDUSTRIES SERVED

- Power Plant/Textile/Garments/Cement/Ceramic
- Biotechnology/Food/Pharmaceutical
- Manufacturing (general, scientific, medical devices, semiconductors)
- Metrology/Testing Laboratories
- Aeronautics
- Defense
- Automotive
- Energy/Green energy
- Telecommunications

A FIRM COMMITMENT

Quality is our Commitment. Our mission is to ensure customer satisfaction by maintaining an environment dedicated to quality, capability, timeliness, and reasonable prices. We give clients the confidence that the test results are in line with the international standard. We consistently deliver what we promise, according to schedule.

Clients can count on QES for the ultimate convenience. Having a vast array of Testing equipment, we can address all the testing and inspection needs of most businesses. We serve a wide range of industries and can test and inspect across all major disciplines. Furthermore, we offer a fast turnaround on most testing and inspection services (including overnight and four-day service) and can schedule site service.


We maintain our technical competence with training from various national and international bodies.

TRACEABILITY

QES is following the guidelines of ISO 9001:2015 and ISO/IEC 17020:2012. QES meets the technical competence and management system requirements necessary to consistently deliver technically valid results. QES provides traceability with each and every test and inspection with transparency. The certificates issued by QES are strictly followed by the requirements of ISO 9001:2015 and ISO/IEC 17020:2012. All Testing and Inspection equipment are traceable to the national/international standards.

CONTACT US

 House # 535 (3rd Floor), Road # 8, Avenue # 6, Mirpur DOHS, Dhaka-1216.

 +8801753702216; +8801730474822

 sm.qcsbd@gmail.com; tm.qcsbd@gmail.com
website: www.qualitycalibrationbd.com

CONCLUSION

We are committed to providing the best Testing and Inspection service with minimum turnaround time. We always give the best value of money focusing on customer satisfaction and their requirements. So, don't hesitate to contact us if you want to know the condition of your measuring instruments.

===End===